


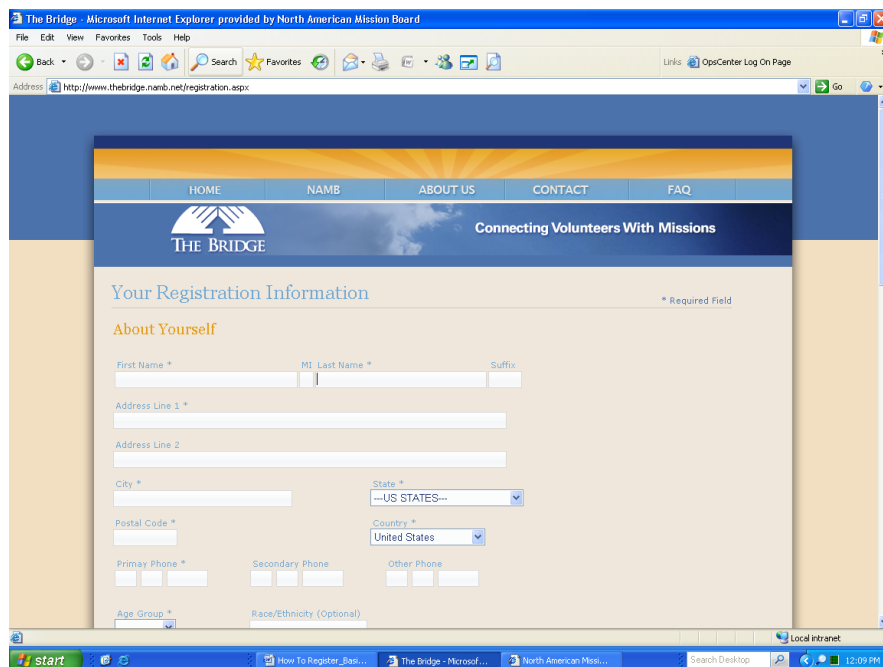
Instructions for Volunteers Using The Bridge

How do I register?

1. Go to TheBridge.namb.net.
2. Click the  button.



3. You will be taken to the registration page. Fill out your personal information. **An *** indicates a **required field**. When finished, click the Submit button at the bottom of the page. You will be returned to the Home Page.

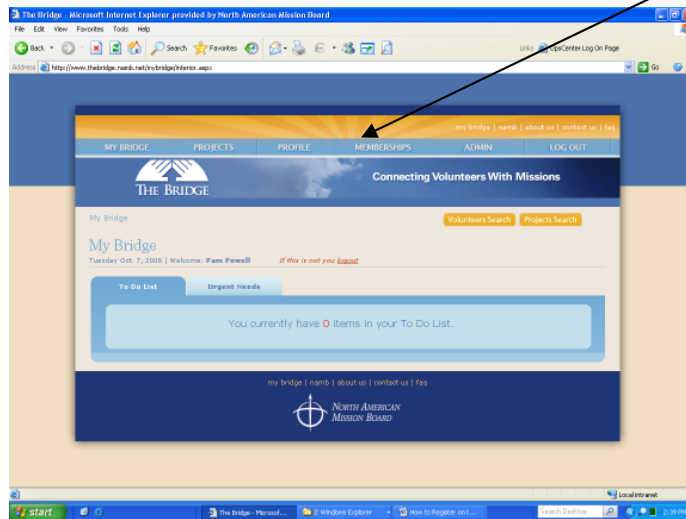


4. Congratulations! You are now a registered user on The Bridge and can login using your e-mail address and password.



How do I add a family or group membership (optional)?

1. Login. On your My Bridge page, click Memberships in the task bar.

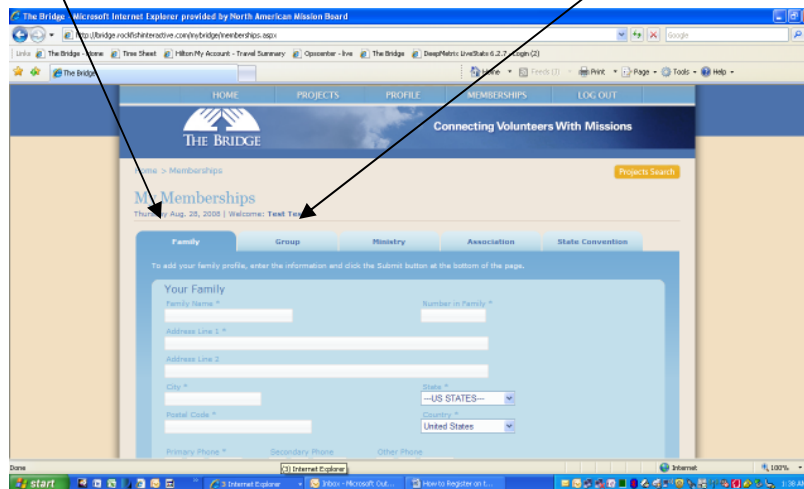


Why add a family or group membership?

Family: If you add your family members, you can express interest in projects as a family unit. Also, project managers can find your family unit (if the search criteria matches) when they do volunteer searches.

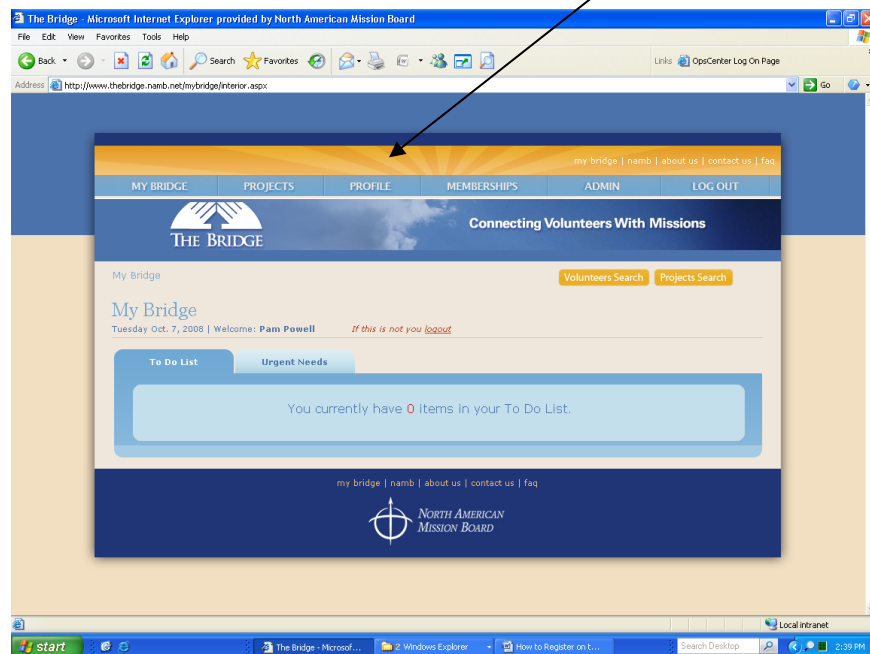
Group: If you are a leader of a Sunday School group, construction group, or another type of ministry group, you can express interest in projects as a group. Also, project managers can find your group (if the search criteria matches) when they do volunteer searches.

2. Click the Family tab to add your family information or the Group tab to add your group information. Click Submit when finished.



How do I update my profile/change my e-mail address/change my password?

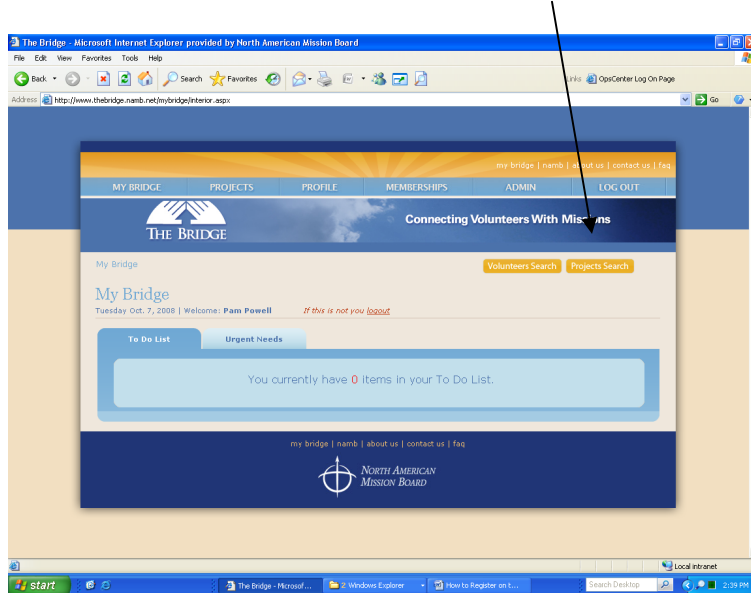
1. On your My Bridge page, click Profile in the task bar.



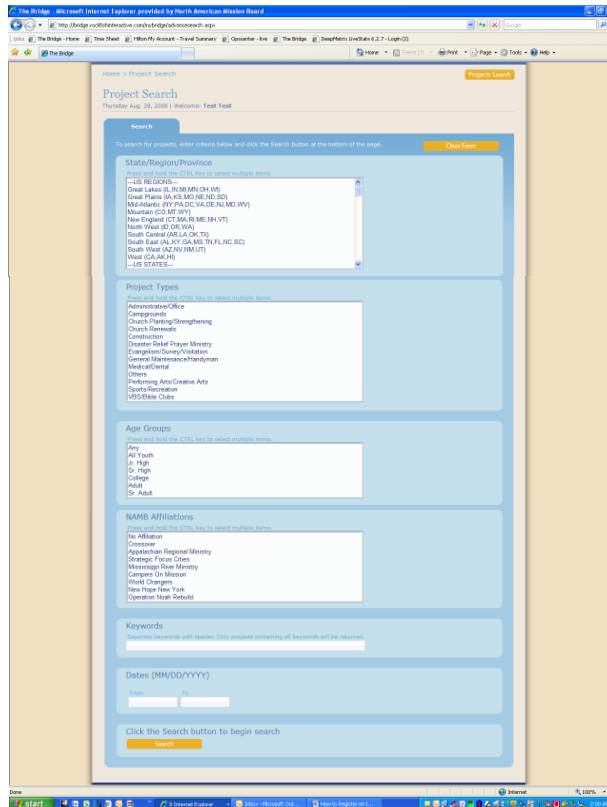
2. Make changes and click Submit.
3. *If you have other memberships, such as family or group, you must go in to each membership to update that information. Changing your Profile does not automatically change your personal information in other areas.*
4. Any time you have a change in your personal information, please login to The Bridge with your most current e-mail and password and make those changes. *We request you have only one profile in The Bridge.*

How do I search for a project and express interest in volunteering?

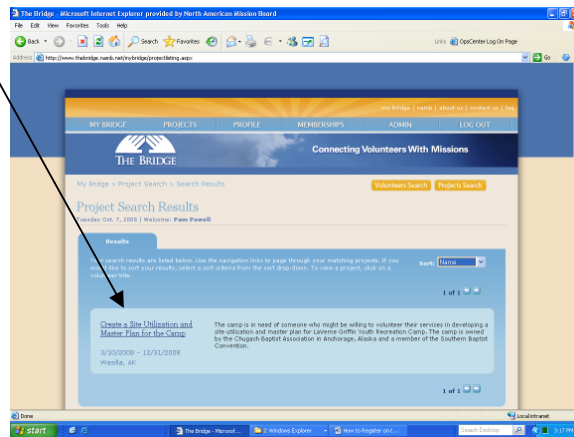
1. On your My Bridge page, click the Project Search button.



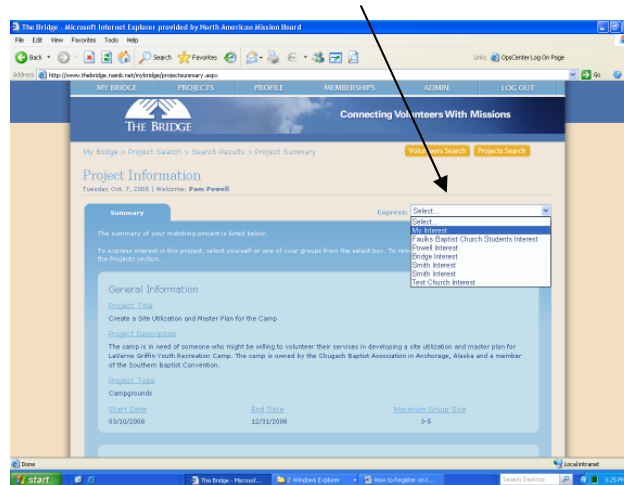
2. On the Project Search page, choose criteria (e.g., State/Region/Province, Project Type, etc.) as desired. Press and hold the CTRL key to select multiple choices within each section. Click Search at the bottom of the page.



- All projects meeting the search criteria will be returned. Click the project title to view the project details.



- If you wish to express interest, click the down arrow in the Express Interest box and select My Interest if you are an individual volunteer. If you have a family or group membership, your family and/or group name will appear in the drop-down box as options.



- An e-mail will be sent to the project manager with your expression of interest. The project manager should contact you shortly.

If you need assistance, contact:

Volunteer Mobilization Center
 North American Mission Board
 1 800 462-8657
 volunteers@namb.net